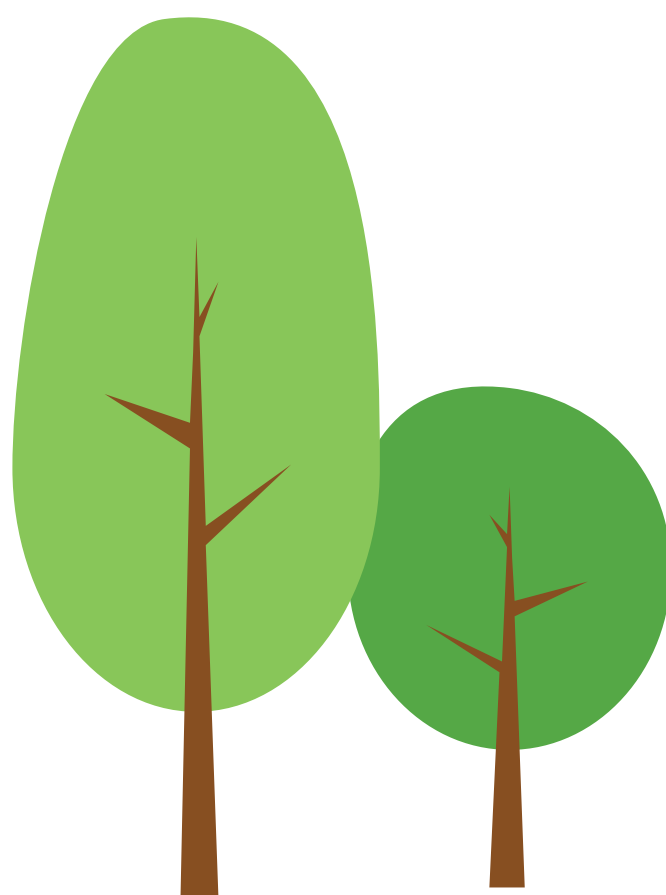
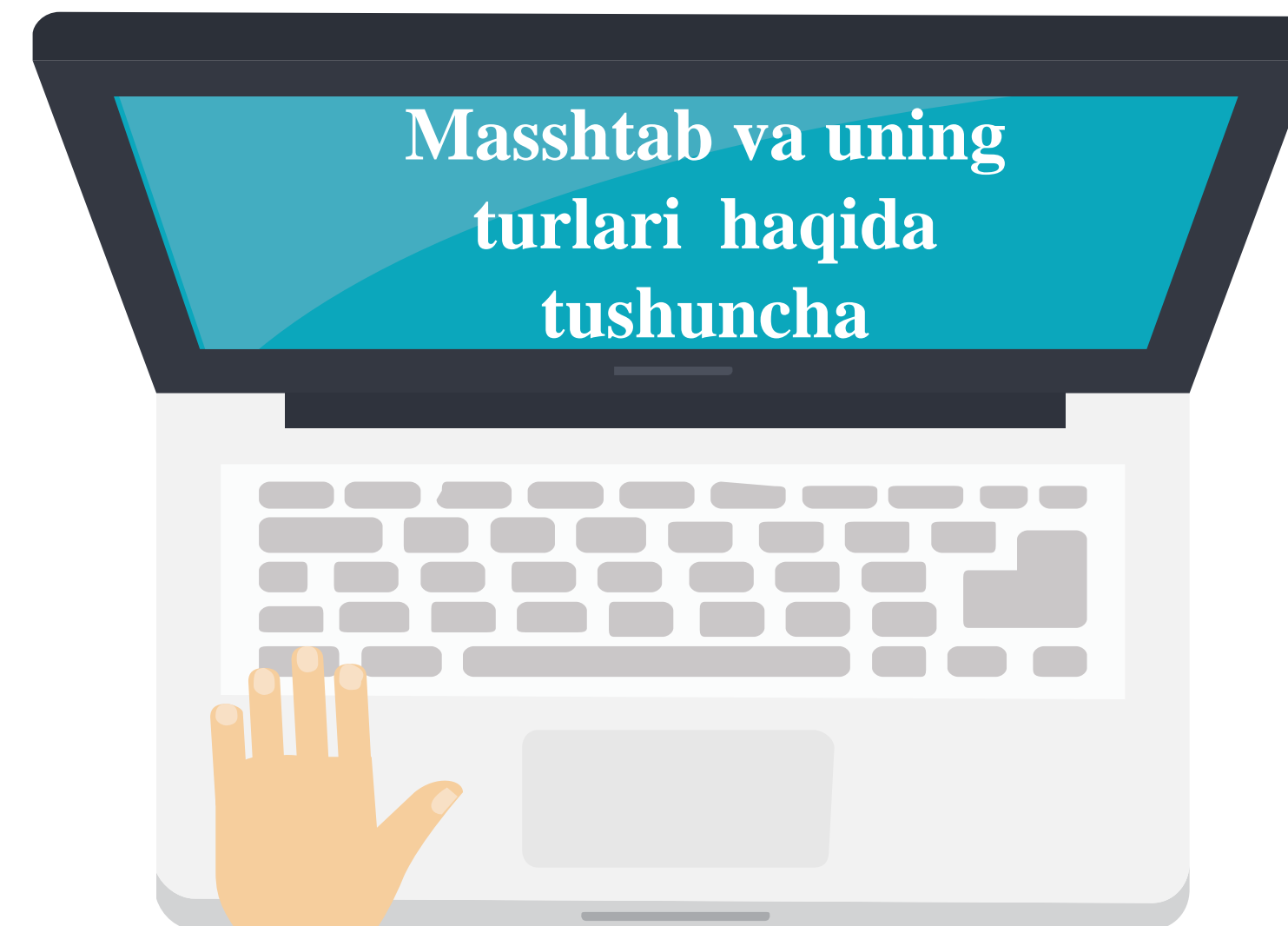


# Sirdaryo viloyati pedagogika markazi



**Yo'ldoshev Abdurauf**

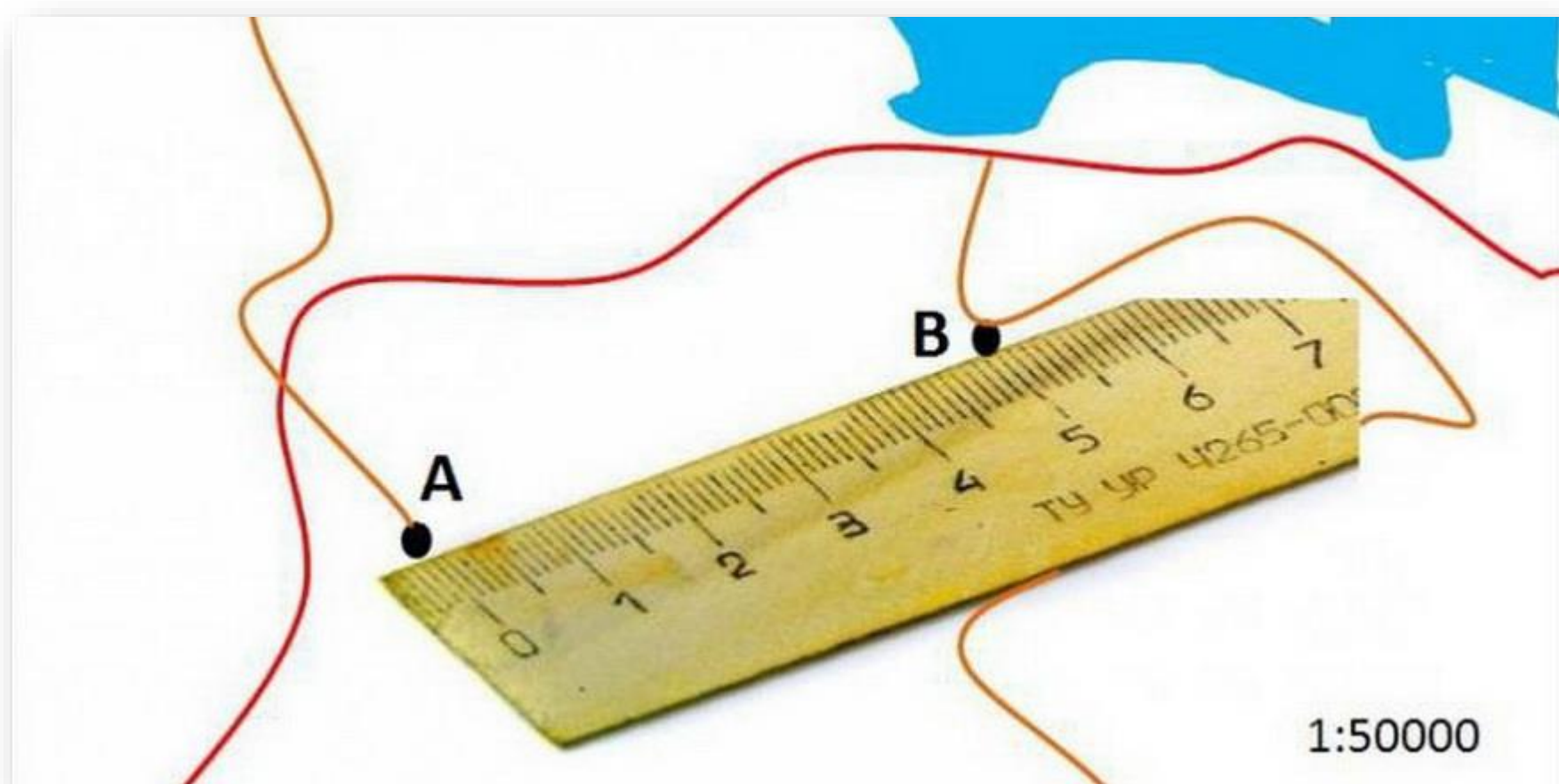


## Masshtab

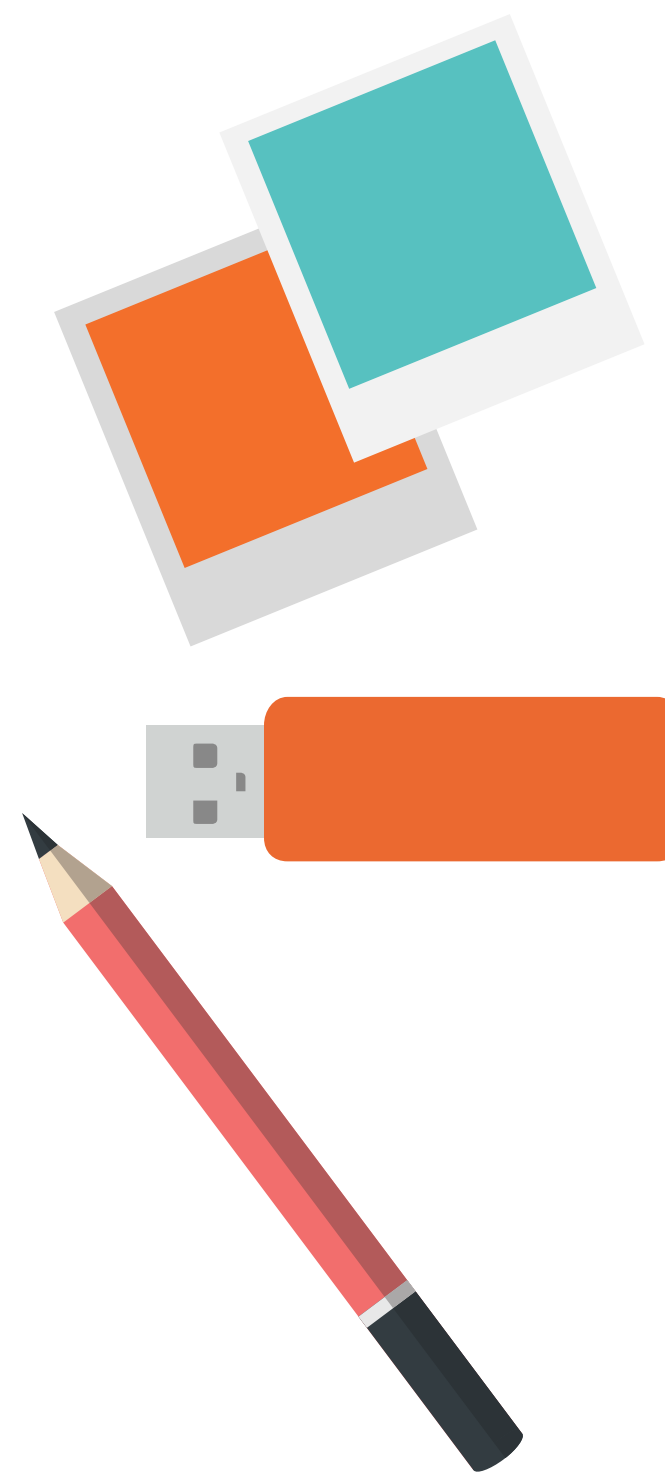
Umumta'lim maktablarida geografiya fani 7 – sinfdan boshlanib, darslikdagi amaliy mashg'ulotlar bilan bog'liq dastlabki mavzu bu – masshtab.



# MASSHTAB



Yer sirtidagi ikkita nuqta orasidagi haqiqiy masofani planda (rejada), xaritada yoki globusda qancha marta kichraytirilib tasvirlanganligini ko'rsatuvchi kasr songa - masshtab deyiladi.



# MASSHTAB TURLARI

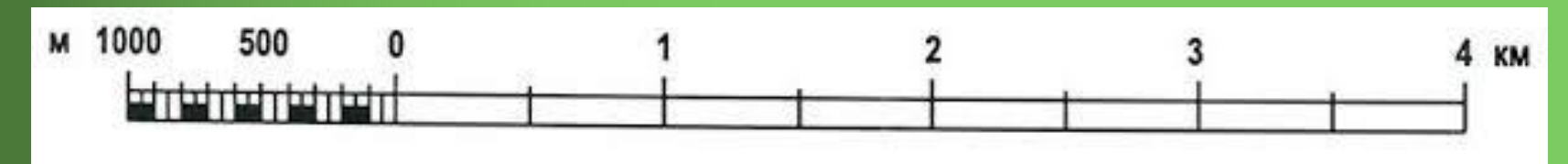


Masshtab uch xil bo'radi: sonli masshtab, nomli masshtab va chiziqli masshtab.

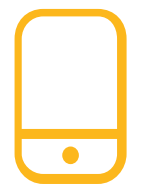
1: 100 000 ..... sonli masshtab

1 sm da 1km ..... nomli masshtab

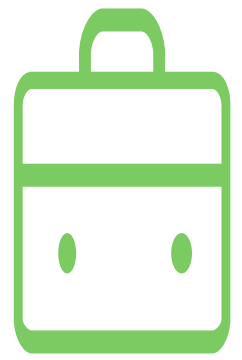
Chiziqli masshtab



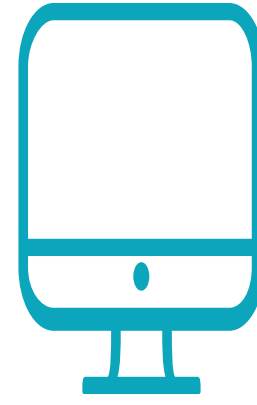
# MASSHTAB



→ **1:1000000**




Masshtabdagi 1 raqami xarita, globus yoki plandagi istalgan 1 sm masofani bildiradi.



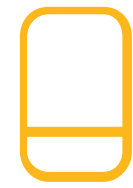
**1: 1000000** ←

Masshtabdagi 1000000 soni xarita, globus yoki plandagi istalgan 1 sm masofaning hayotda qancha masofaga tengligini bildiradi.



Masshtabda eng muhim narsa sonli masshtabni nomli masshtabga, nomli masshtabni sonli masshtabga aylantirishdir.

# Sonli masshtabni nomli masshtabga aylantirish



Agar sonli masshtabda nollar soni 5 ta va undan ortiq bo'lsa orqadagi 5 ta nol o'chiriladi va nomli masshtab kilometrda beriladi.



Masalan: 1:1000000 ko'rinishdagi sonli masshtabni nomli masshtabga aylantiramiz.

$1:1000000 = 1\text{sm da } 10\text{ km bo'ladi.}$



Nega 5 ta nol o'chiriladi ?

Sabab !

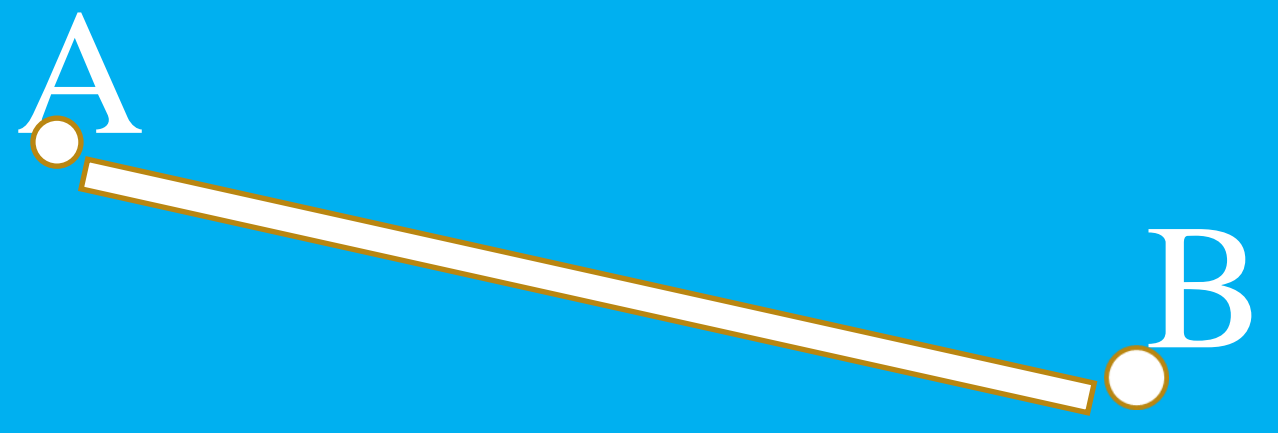
1 m = 100 sm

10 m = 1000 sm

100 m = 10000 sm

1000 m = 100000 sm

10000 m = 1 km



5 sm

Masshtab 1:10000000  
1 sm da 100 km

100 0 100 200 300 400

A scale bar is located in the bottom-left corner of the image. It consists of a horizontal line with vertical tick marks. The markings are labeled with the numbers 100, 0, 100, 200, 300, and 400 from left to right. The text 'Masshtab 1:10000000' and '1 sm da 100 km' is positioned above the scale bar.

# MASSHTABGA DOIR MASALALARNING ISHLANISH USULLARI

1-masala.

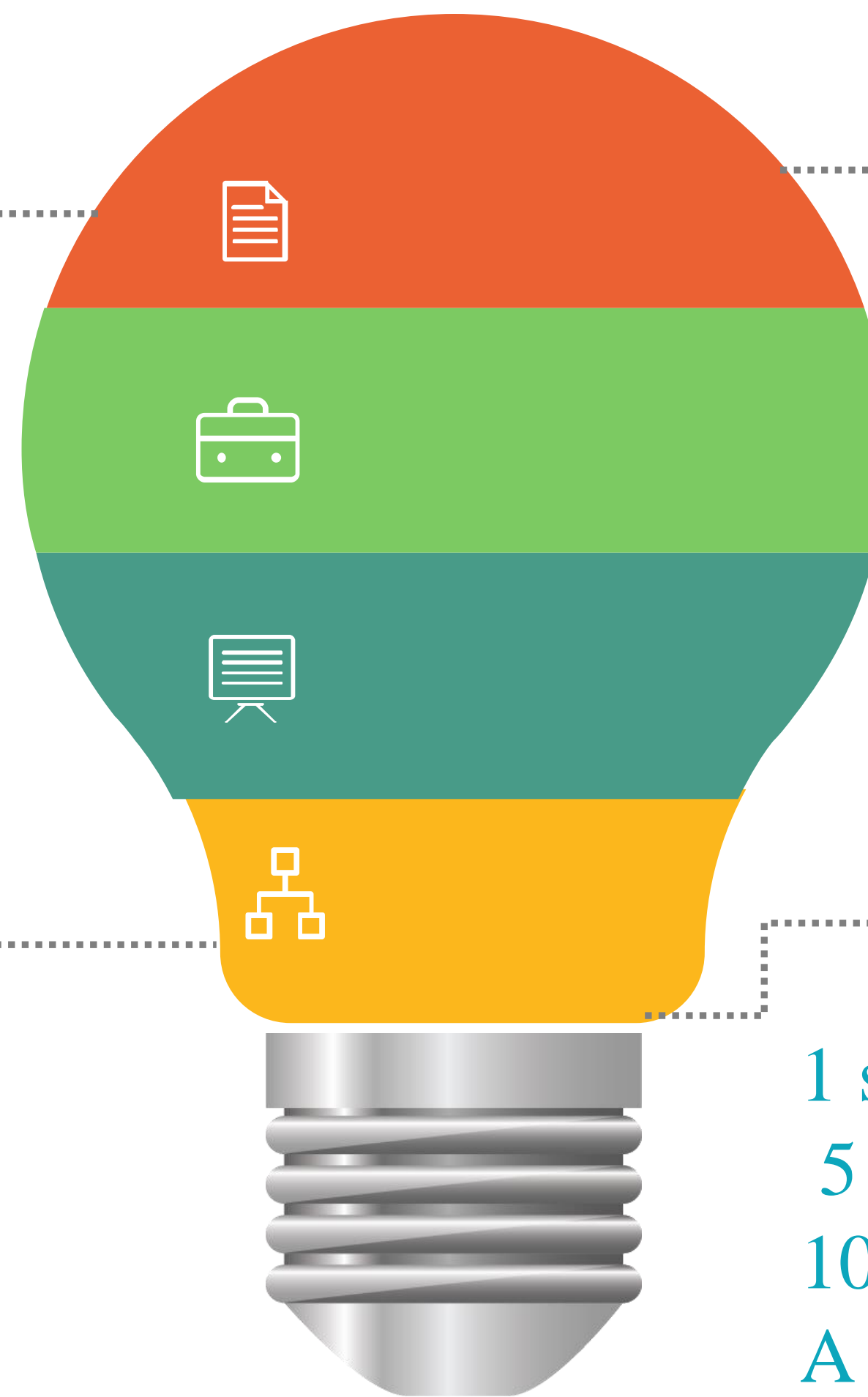
Bizga berilgan xaritada A va B nuqtalar orasidagi masofa 5 sm ga teng bo'lsa, ushbu shaharlar orasidagi masofa hayotda qancha masofani tashkil qiladi ?

Xarita masshtabi 1:10000000

Ishlanishi:

Dastlab xarita masshtabini ixchamlashtirib olamiz, ya'ni sm ni km ga o'tkazamiz. Buning uchun masshtabdagi 5 ta nolni o'chiramiz.

1:10000000 yani 1 sm da 100 km ni tashkil qiladi.



Demak bizga berilgan masshtab bo'yicha xaritadagi istalgan 1 sm masofa hayotda 100 km masofaga teng ekan..

Endi proporsiya tuzamiz :

$$1 \text{ sm} = 100 \text{ km}$$

$$5 \text{ sm} = X$$

$$10000000 \times 5 = 50000000$$

A va B shaharlar orasidagi masofa hayotda 500 km ga teng ekan.

**Bizni ijtimoiy tarmoqlarda quyidagi rasmiy sahifalar  
orqali kuzatib boring !!!**



**[t.me/sirdaryomilliymarkaz](https://t.me/sirdaryomilliymarkaz)**



**[https://www.youtube.com/channel/UCjOmnRRrcdAPjnV\\_8zys2Tg](https://www.youtube.com/channel/UCjOmnRRrcdAPjnV_8zys2Tg)**



**<https://www.facebook.com/SirdaryoPedagogikaMarkazi/>**

**Website : <https://sirdaryomoi.uz/>**



# E'tiboringiz uchun tashakkur



[abduraufyoldoshev05@gmail.com](mailto:abduraufyoldoshev05@gmail.com)

